

# Tamworth Intermodal Rail Line

The NSW Government is commencing construction works to reactivate five kilometres of non-operational rail line between West Tamworth and Westdale. The work is being carried out in partnership between Transport for NSW, Tamworth Regional Council and Department of Regional NSW. The project is funded by the Restart NSW Fund.

Reactivation of the rail line will allow rail access to Council's planned Tamworth Regional Freight Terminal to be located near Goddards Lane.

Construction works to enable train services to operate are scheduled to be finished in late 2021. The work schedule is subject to weather and any other unforeseen conditions.

## What's included?

The rail line component of the project includes:

- Replacement of approximately five kilometres of railway track and ballast between West Tamworth and Westdale
- Replacement of four culverts
- Replacement of four bridge structures
- Upgrading level crossings at Gunnedah Road, Evans Street and Dampier Street.

## What's happened so far?

Early work to establish the site commenced in May 2020. This included fencing the project site, removing the redundant infrastructure such as existing rail and sleepers and procuring the new rail lengths and sleepers.

The early works were completed by John Holland Rail (JHR) on behalf of Transport for NSW.

## What's happening now?

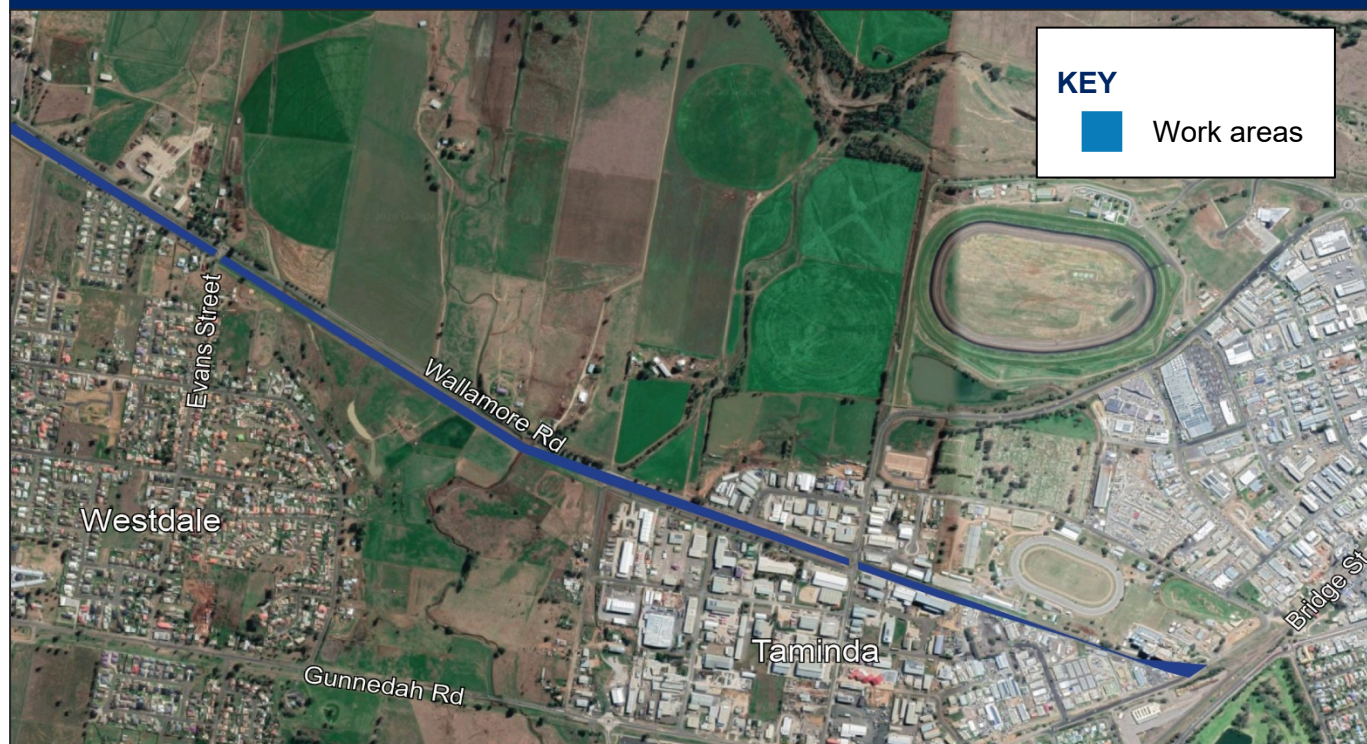
The contract for major construction work has been approved and this month JHR will continue preparing the site for this work to start in January 2021.

The preparatory works include placing about 1000 tonne of rock to provide flood protection around the bridges adjacent to Wallamore Road and constructing an access track through the site.

## Upcoming work

In early January 2021, work will begin on constructing three new bridges and new drainage culverts. There will also be a significant increase in the delivery of materials to site in preparation for the start of track works in February 2021.

## Construction area and location



## Hours of work

Construction will be carried out **Monday to Friday from 7am to 6pm** and **Saturday from 8am to 1pm**. Affected community and businesses will be notified if work needs to occur outside of these hours, including night work.

## How will I be affected?

Construction will take place within the existing rail corridor. We understand our work may create noise and vibration at times. We aim to minimise this by:

- Only using noisy machinery when we absolutely must
- Doing noisier work at less sensitive times
- Using barriers and sound blankets to reduce noise
- Directing noise away from residents when we can
- Limiting the use of highly intensive noise and vibration generating equipment to three-hour continuous block, with a minimum one-hour break in between.

## Traffic and access changes

Access to private residences and businesses will be maintained. Any changes to access or traffic will be communicated to stakeholders and traffic and pedestrian controls will be put in place, as required.

## Contact

To help us get in touch with you, we invite you to register your preferred contact details with our Community Relations Team. Head to **[www.surveymonkey.com/r/TIRL](https://www.surveymonkey.com/r/TIRL)**

If you have any questions or would like more information on the project, please contact our Community Relations Team on **1300 661 390** or email **[crn.enquiry@jhgc.com.au](mailto:crn.enquiry@jhgc.com.au)**